

2803/305

CLOTHING CONSTRUCTION III
PRACTICAL

Oct./Nov. 2017

Time: 6 hours

8



THE KENYA NATIONAL EXAMINATIONS COUNCIL

DIPLOMA IN FASHION DESIGN AND CLOTHING TECHNOLOGY

MODULE III

CLOTHING CONSTRUCTION III PRACTICAL

6 hours

INSTRUCTIONS TO CANDIDATES

1. You should have the following for this examination:
 - (i) plain medium weight fabric 2 metres long by 152 cm wide;
 - (ii) interfacing 50 cm by 78 cm;
 - (iii) lining fabric $1\frac{3}{4}$ metres long by 152 cm wide;
 - (iv) two buttons 2 cm wide without shanks;
 - (v) brown papers;
 - (vi) one large envelope;
 - (vii) sewing tools.

2. At the end of the examination:
 - (a) stick on a label bearing your name and index number on a single layer of fabric without concealing any details;
 - (b) enclose the garment in the large envelope provided.

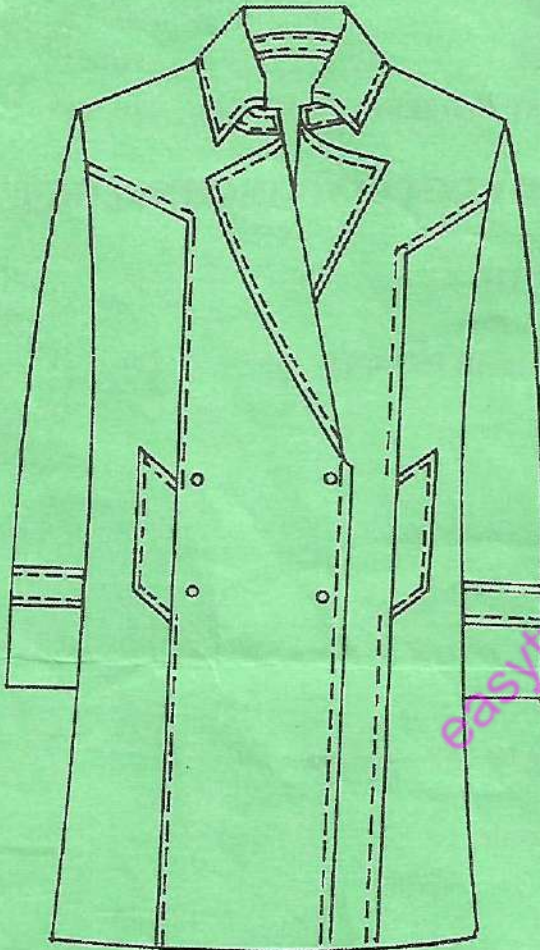
This paper consists of 2 printed pages.

Candidates should check the question paper to ascertain that both pages are printed as indicated and that no questions are missing.

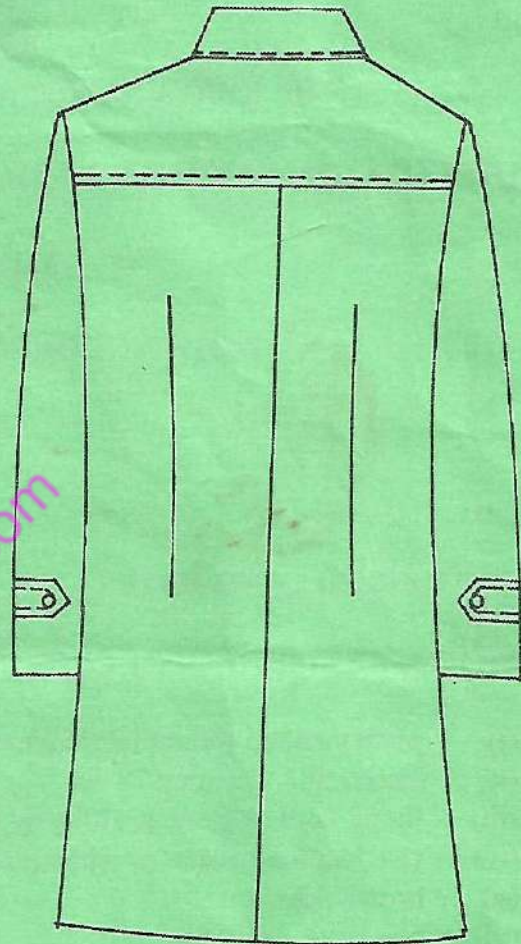
TASKS

Using the measurements and the materials provided, cut out and make the trench coat style sketched below as follows:

- (i) use the true lining method;
- (ii) make two handworked buttonholes at the break point and attach the buttons;
- (iii) fix the back yoke with overlaid seam.



FRONT VIEW



BACK VIEW

MEASUREMENTS

Chest	-	72 cm	Scye depth	-	17.4 cm
Waist	-	62 cm	Back neck to waist	-	32.6 cm
Hips	-	77 cm	Waist to hip	-	16.2 cm
Across back	-	29 cm	Full length	-	75 cm
Neck size	-	32 cm	Sleeve length	-	54 cm
Wrist	-	15 cm	Pocket mouth width	-	12 cm
Shoulder	-	10.5 cm			

THIS IS THE LAST PRINTED PAGE.